

POLLOKSHIELDS HERITAGE

Special points of interest:

- New style e-newsletter and website
- Bringing the 1911 census alive in Pollokshields
- Heritage design & materials for your home
- Lecture series
- 100 years of change—modern architecture in 1911 and 2011



© Roger Millar, Hamish and James Stevenson

We Are On The Web!

Inside this issue:

Heritage News & Events	2
The Fotheringay Lectures	3
Who (or Where) Do You Think You Are?	4
Finding Dalcairnie - A Case Study	5
Design Matters	6
1911 to 2011 One Heritage	7
Contact Us and Membership Details	8

Welcome to the first edition of your brand new e-newsletter. Through quarterly email we'll keep you up to date with topical heritage information, advice, events, issues and current affairs relating to life in and around Pollokshields past, present and future.

By Spring 2012, e-newsletter articles will be linked to the Pollokshields Heritage website where expanded detail will complement the newsletter information.

Copies of the newsletter will be available in local venues and by special request. If you are not receiving this newsletter by email and wish to, just send your email address and request to us at:

editor@pollokshieldsheritage.org and we will add you to the distribution list.

Over the coming months we will also be developing and enhancing our services for members, and seeking contributions. To become a member of Pollokshields Heritage, go to:

<http://www.pollokshieldsheritage.org/Membership.html>

By Spring 2012 we will have our own Facebook page, where we can share views, comments and activity, plus provide active links to other dynamic Southside community websites.

The illustration at the top of the page was created by Roger Millar using his own photograph of Shields Road taken in 2011 with an original tramcar photograph from 1958 taken by Hamish and James Stevenson superimposed.

Heritage Tours, Trails & Exhibitions

The Pollokshields 160th Anniversary Bus Tours and Exhibition “Pollokshields Past and Present” have been a great success, with four guided bus tours over the Summer, including the Doors Open Day 2011 exhibition in Maxwell Park Station.

The three Heritage Trail publications when launched in 2012 will add a rich resource to our heritage collection of information and materials. We also continue to gather existing valuable archive materials including:

- original 100 page Retrospective of Cartha Athletic Club from 1905
- over 200 photographs of the GCT Tramcars passing through Pollokshields
- catalogued list of 368 items of Pollokshields related materials held in the Glasgow Museums Resource Centre.

For more detail of these collections go to:

<http://www.pollokshieldsheritage.org/Projects.html>

Over the next few months lots of these will be digitised and added to the website for our “Virtual Pollokshields” collection. As ever, if you have any archive materials that would be of interest, please email Helen McNamara at: editor@pollokshieldsheritage.org



Maxwell Park Station Booking Office is available as a meeting place or exhibition venue for community activities. Contact Karin Currie at karin_spalter@hotmail.com

Partner Events

Glasgow Women's Library
Promoting wellbeing through walking and storytelling

Attention Women of Pollokshields and Govanhill

Personal History Tours

Promoting healthy living and the chance to explore your own area as never before with your very own Personal History Tour. As individual as you are! It will be a good opportunity for you to reflect and also to encourage physical activity.

For more information or to take part, please contact the Pollokshields Health Shop on 0141 420 3415

This project is supported by NHS Greater Glasgow and Clyde.

Glasgow Women's Library
Call 0141 248 9906, email info@womenslibrary.org.uk, visit us online at womenslibrary.org.uk, find us on Facebook (facebook.com/womenslibrary) or follow the @GWL on Twitter (@gwlib).
Or pop in and see us at 15 Berkeley Street, Glasgow G3 7BW
Registered Company No: 37807 Charity No: SC02981

She Settles in the Shields— publication and launch



Over 90 people attended the book launch and celebration event at the Pollokshields Burgh Hall. The event started with welcomes and an introduction to the project, followed by Rahit Zahid, well-known Asian poet from Glasgow, who read some poetry from her collection on the subject of migration and leaving the home country.

Next was Karin Currie from Pollokshields Heritage who provided the audience with a historical account of Pollokshields. Karin is also one of the 25 women interviewed for the project.

The best part of the day was hearing from the women participants themselves who read a short paragraph from their story in the publication. Irfan Rabanni, Labour Party Councillor for Pollokshields, attended what was truly a celebratory event. For more info on this and Personal History Tours go to <http://womenslibrary.org.uk/category/news>

“During Doors Open Weekend Maxwell Park Station attracted many enthusiastic visitors, including returning residents, pupils or employees from times past in Pollokshields, all with stories to tell and fond memories”

Glasgow Allotments Heritage Project

For information on Glasgow Allotments Heritage Project and the event held to celebrate the project at the Pearce Institute on 12 November, featuring New Victoria Gardens and South Western Allotments, go to

<http://www.sags.org.uk/GlasgowHeritage/>

The Fotheringay Lectures December 2011 to April 2012



Come along to the contemporary interior of the Fotheringay Centre for a relaxing evening and for £5 enjoy the lecture with a glass of wine. This year our guest speakers are:

- John Pelan, Director of Scottish Civic Trust (SCT) and of John Pelan Associates, a specialist architectural communications consultancy. SCT has a unique role in Scottish society, fostering greater understanding of historical and contemporary architecture
- David Martin, architect, historian and Trustee of Strathclyde Building Preservation Trust (SBPT), and for 20 years a Building Conservation Officer for Glasgow City Council, also awarded an MBE for his book "Services to the Conservation of the Built Environment" in 2002
- Simon Metcalfe, Development Manager of the New Gorbals Housing Association (NGHA), which has commissioned architects Page and Park and Elder and Cannon to design the first phase of the Laurieston redevelopment
- Ian Johnston, retired Deputy Director of the Digital Design Studio at Glasgow School of Art, and author of seven books on maritime subjects mostly in connection with shipbuilding on the Clyde
- Kevin Murray, leading urban planner and facilitator with over 30 years experience in this field, currently Chairman of the Academy of Urbanism and Honorary Professor of Planning at Glasgow University—working with distinguished American "new urbanist" Andres Duany on the Aberdeen masterplan

For more information on all our speakers go to <http://www.pollokshieldsheritage.org/Lectures.html>

The Fotheringay Centre is located at 63 Fotheringay Road, G41 4NN at the corner of Beaton Road adjacent to Hutchesons' Grammar School who purchased, restored and developed the church building to include a multi-purpose auditorium and lecture theatre. Close to Maxwell Park railway station, the centre is also readily accessible from Crossmyloof station.

Schedule of Events

7 Dec:
John Pelan:
"Scotland's Civic Movement: The Way Forward"

25 Jan:
David Martin:
"Glasgow's Windows and Doors"

29 Feb:
Simon Metcalfe:
"A Miracle in the Gorbals—A History of Gorbals Regeneration"

28 Mar:
Ian Johnston:
"Shipbuilding in Govan: 1840—1912"

25 Apr: AGM:
Kevin Murray:
"Grandhome and the National SSCI Charette"(masterplan project in Aberdeen)

“Join Pollokshields Heritage today and take advantage of our House History Research Offer.

See Page 8 of this Newsletter for Membership Form.”



“In that one afternoon at my home computer, this Edwardian family seemed to come alive within these walls“

Who (or Where) Do You Think You Are?

House History Research Offer

To celebrate 160 years of Pollokshields, we invite members who would like to research the house they live in, and the people there before them, to express their interest by emailing us. We will carry out the initial search for you and provide you with details and references. If this whets your appetite you can then follow up by researching further. Why not spend a Saturday morning at the Mitchell Library Glasgow Rooms with younger family members involved. The resources are very accessible, it is great to learn something new, and it's fun! We can share information and build up a picture of Pollokshields by era on the website. To join and take advantage of this offer, complete the membership form at <http://www.pollokshieldsheritage.org/Membership.html>, send it to us by post to The Membership Secretary, Pollokshields Heritage, PO Box 3754, Glasgow G41 4YF then email Helen McNamara at editor@pollokshieldsheritage.org expressing your interest in this offer and we will get you started!

Edwardian Pollokshields & 1911 Census

The recent interest in the Edwardian period of 1901 to 1910, and extending to the start of the Great War in 1914, as seen in the television series *Downton Abbey*, and in vintage fashion, is in no small way influenced by the release of the 1911 census in April 2011, marking a century since the data was gathered. This era, known as the start of the “people’s century”, with women’s suffrage, trade unions, the motor car, innovation in science and technology, and radical politics coming to the fore, influenced life for the residents of Pollokshields.

In this issue and on the website we feature a taste of Pollokshields Edwardian architecture and local lives discovered via the 1911 census.

Inspired by local historian Sheila Ogilvie’s guide to researching “the house you live in”, as featured in the last newsletter, the case study here, *Finding Dalcairnie - A Case Study*, is a snapshot of the life of one family and their home in Pollokshields in the Edwardian period, and is the result of one day spent in the Mitchell Library Glasgow Room searching the annual 1876—1976 GPO Directories followed by the 1911 Census. This intriguing insight into one house and family only scratches the surface and leaves so many questions still to be answered.

Through the information included in the 1911 census, we learn about the standard of living from the number of rooms with windows in each house, the personal occupations of the people, the number of children born alive and children living, whether the households had servants, the birthplace of each resident, and thus get an idea of what daily life must have been like. By 1911, most of the villas and tenements in Pollokshields were established, with some Edwardian additions of note built during the period. Architecturally, lighter colours were used in interiors; gas and electric lights made design less concerned about disguising soot build up; decorative patterns were less complex in wallpaper, ornaments and curtains. See *Design Matters Studio* article for our planned design advice service.

Finding Dalcairnie—a Case Study

My family has lived in this villa in Leslie Road for almost twenty years, but we never knew until now that it was called Dalcairnie when it was built in 1881 and until its conversion in 1951. Amongst the many named heads of households living here discovered through only one hour's research in the open access GPO Directories in the Mitchell Library—from the photographic artist in 1899 with studios in Jamaica Street, to the owner of the company in St. Enoch Square who sent mail packages to the Cape of Good Hope in 1903—the one who stood out the most was Stewart Lawrie, Manager of the Alliance Assurance Company in West George Street, mainly because he lived here the longest and in Edwardian times - from 1912 in fact.

A further afternoon spent searching the 1911 Census through the website Scotland's People uncovered the rest of the Lawrie family, then living in 48 Princes Square (now Marywood Square), Strathbungo: Stewart's wife Ada Pauline and their children Pauline, Isabel and Edwin, plus one 19 year old servant from Motherwell, Elizabeth Bridges. The census information gives each of their ages in 1911, from which one can work out dates of birth. This allows a search on Scotland's People of related births, marriages and deaths.

These certificates, and preliminary Google name searches, reveal so much more. Stewart Lawrie held positions of office such as President of the Insurance and Actuarial Society of Glasgow from 1909 to 1910, but why did the family wait until their children were 18, 16 and 11 to move from a substantial townhouse in Strathbungo, in 1912, to Dalcairnie in Leslie Road? Ada was a daughter of the then well-known Russ family of furriers whose clientele included such luminaries as John Jacob Astor and Ernest Hemingway, and the Russ family lived for many years at 35 Newark Drive.

Stewart and Ada were married for 40 years and died within two months of each other in 1930, he aged 76, she aged 59, yet he died in this house and she died at her brother's home in Edinburgh two months earlier, with Dalcairnie recorded as her normal address. What led them to have to be apart at such a time: possibly Ada was away for treatment. The house was subsequently sold in the same year.

Their children all died young but in very different circumstances. Pauline went to Canada to be married, but was sadly widowed and left with two small children, so she came back to live with her sister Isobel, spinster and domestic science lecturer, at 64 Terregles Avenue, until her death from tuberculosis aged 48 in 1941, preceded in 1938 at age 42 by her younger sister. Edwin met a more tragic end. He graduated in medicine at Glasgow University, and went to work in Malaya where he became a surgeon. At the fall of Singapore his wife and younger daughter, who were there, sailed for Australia but Edwin stayed on as he thought he would be needed as a doctor, was imprisoned at Changi and died there in 1943, aged 44.

In that one afternoon at my home computer, this Edwardian family, living in this house for 18 years, seemed to come alive within these walls. As we occupy the upper conversion, it is within their bedrooms I imagine life for them. They have left me with more questions to be answered, and a sense of how fragile life is, but also a sense of them being a real "Pollokshields family", just like us (albeit a lot wealthier and occupying the full house!!), moving here from another local address, with other family members living only a few streets away, and across the generations.



35 Newark Drive



48 Princes Square



64 Terregles Avenue



Dalcairnie, Leslie Road

Design Matters Studio

Over the next few months we will be introducing Design Matters Studio, featuring case studies, ideas for your home, and suggesting innovative ways to get the best use of space, light and materials. We will be starting with Stone and Slate, featuring a contemporary home in Pollokshields that uses these and other natural materials in its interior, to stunning effect. We will offer general advice on the use of stone in modern settings within old buildings.

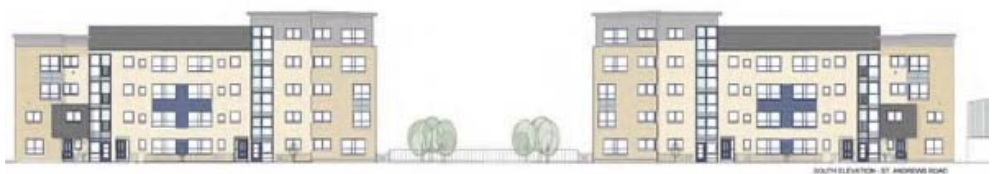
Soon you will be able to share and browse through ideas for space planning, conversion and renovation of typical Pollokshields-style tenements and villas, in keeping with their traditional origins but designed fit for purpose for modern lifestyles. Examples will include plans and elevations of rooms, how to make best use of existing space, let more light in, how to obtain a building warrant and any other permissions where structural alterations apply. We will suggest how to create new spaces or redefine existing ones, e.g. an additional bathroom, a new workspace, eating or sleeping areas, without detracting from and in keeping with the original features of your home but still meeting your needs in the 21st century.

In September we hosted a joint debate with the Glasgow Branch of the Saltire Society, entitled “Modern Scottish Architecture—is there such a thing and does it matter?”. Speakers were David Page of Page & Park, Roan Rutherford of Austin-Smith:Lord, and Niall Murphy, Chair of Pollokshields Heritage. The event was organised and chaired by David Ward of the Saltire Society. This, and future events, will complement the Pollokshields Heritage Design Studio approach.

In addition, by becoming a member of Pollokshields Heritage, you will be able to log in to the members’ area where you can ask questions or email directly with a design question for free preliminary impartial advice on your own home situation. We will also build up a section of answers to frequently asked questions (FAQs) and share these with members. To become a member go to <http://www.pollokshieldsheritage.org/Membership.html>

Our first case study will be online late January through this link: <http://www.pollokshieldsheritage.org/Advice/Interiors.html>

Tenement Design 1911 and 2011



In our next newsletter we will feature Pollokshields’ innovative tenement interiors of 1911, including a case study of a fine Edwardian building in Kirkcaldy Road, with the history of the building and who lived there in the Edwardian era. Then by contrast we will look at the tenements of 2011 managed by Southside Housing Association. There will also be interviews with the architects of today on the challenges, compromises and design considerations brought to bear in designing for lifestyles today.

“Go to the Design Matters Studio on the website for design advice about your home interior, and get in touch with your questions”

1911 to 2011—One Heritage

Grand Villa 2011

This new private house in West Pollokshields, Marlaw, home to Mark and Natalie Lawlor, is a stunning example of a grand villa for the 21st century. Natalie as client was involved at all stages, travelling widely to source materials and objects for their beautiful home.

The house sits on a steeply sloping site, and was designed by Gareth Hoskins Architects. Built within a former orchard area, bounded on three sides by existing gardens, and with a wooded public park on the western boundary, the dwelling is a contemporary interpretation of the 'Grand Villa'. To avoid 'overlooking', accommodation is arranged around private courtyard gardens that terrace down to the front entrance in response to the site slope. The line of the boundary wall continues into the main body of the building with a frameless glass wall, to form a covered entrance. Cantilevered timber staircases and a glazed lift maximise light in the double height reception area whilst providing access to bedroom suites. The master bedroom on the third floor cantilevers over the drive to maximize sunlight & views, and opens onto a south-facing roof terrace.

Our interviews with Natalie Lawlor and architect Chris Coleman-Smith, Director of Gareth Hoskins Architects, plus more images and information on the use of stone and slate, will be online late January through this link: <http://www.pollokshieldsheritage.org/Advice/Interiors.html>



Copyright Natalie Lawlor

Grand Villa 1911

There are a number of fine examples of Edwardian grand villas in West Pollokshields, some boasting early "motor car houses", and built after most of the villas in Pollokshields were completed. These will be featured in our Heritage Trail leaflets in the Spring, and we will build up features on some of these, including their interiors and who lived in them around 1911, on our website. Watch this space!



"The Grand Villa in Pollokshields is so much a part of our heritage. Changes in architectural design, lifestyles and technology show our garden suburb remains at the cutting edge"

**POLLOKSHIELDS
HERITAGE
NEWSLETTER**

Please return this form to the
Membership Secretary,
Pollokshields Heritage, PO Box
3754, Glasgow G41 4YF



Office Bearers 2011-2012:

Chair: Niall Murphy

Depute Chair: Iain Dyer

Secretary: Janet Lamb

Treasurer & Membership
Secretary: Hilary Stanger

Planning Convener: Helen
Barnard

To contact us and for
background/profiles of
committee members, go
to [http://
www.pollokshieldsheritage
.org/contact.html](http://www.pollokshieldsheritage.org/contact.html)



Pollokshields HERITAGE MEMBERSHIP FORM

New / Renewal (please indicate)

Name(s)

Address

Post Code Tel. No.

Email

DONATION ENCLOSED (please tick)

£5 £10 £15 £20 Other

Please make cheques payable to Pollokshields Heritage and send with this form to:
The Membership Secretary, Pollokshields Heritage, PO Box 3754, Glasgow G41 4YF
(Standing Order Payments are also possible – below)

GIFT AID DECLARATION

Please treat all donations I have made in the past six years and all donations I make from
the date of this declaration, until I notify you otherwise, as Gift Aid donations.

Signature Date

**Pollokshields HERITAGE
DONATIONS BY STANDING ORDER**

To: The Manager

..... Bank/ Building Society

Address

City / Town Post Code

Name(s) of Account Holder(s)

.....
.....

Please debit my (our) Account No.

Bank Sort Code:

Signature(s)

Date

Please pay Pollokshields Heritage the sum of £ on and thereafter
annually on the same day each year until further notice. This order cancels all previous
agreements in favour of Pollokshields Heritage. I can cancel this agreement in writing at
any time.

Please return this form to the Membership Secretary, Pollokshields Heritage, PO Box 3754,
Glasgow G41 4YF, for forward delivery to your Bank / Building Society.

FOR OFFICE USE: To the Receiving Bank

Please send to Bank of Scotland, 236 Albert Drive, Pollokshields, Glasgow G41 2NL
(Sort Code 80-07-67)

for the credit of Pollokshields Heritage, Bank of Scotland Account No. 00687303

Please quote Reference.....

**Pollokshields HERITAGE is a charity registered in Scotland (No SC030101), and is eligible to
benefit from the Gift Aid Scheme.**

You must pay an amount of income tax and/or capital gains tax at least equal to the tax that we reclaim on your donations
in the tax year (currently 25p for each £1 you give). The Government will pay an additional 3p on every £1 you give
between 6 April 2008 and 5 April 2011. This transitional relief does not affect your personal tax position. Please note: for
the purposes of Gift Aid, the total amount donated to Pollokshields Heritage from one household will be considered to
have been donated by the person who makes the Gift Aid declaration.